



Subject :		Bulletin No : TB/WA/003/21	
Software improvements 3.13C (Target error)		Date : 12-02-2021	
		Bulletin circulated on : 16.02.2021	
Product Name : Wheel Aligner – 3D		Model : FOX-3D & GENIE 3D	
Assembly/Sub Assembly:		Language : English	
Compulsory Update : <input checked="" type="checkbox"/>		Optional Update : <input type="checkbox"/>	
Part Description :		Part Code. :	
Hardware Changes <input type="checkbox"/>	Software Changes <input checked="" type="checkbox"/>	Firmware Changes <input checked="" type="checkbox"/>	

Details

This technical bulletin explains about a development in the wheel aligner software (Both FOX3D & Genie3D). Details explained below.

During the course of wheel alignment, if technician takes out the target plate from wheels either by accidentally or purposefully, the camera will keep on searching the target plates & after few seconds the software will prompt a screen as “Target error” (shown below). This can be resolved in three ways.

A) Re-fix the target on the wheels & resume back to normal operation.

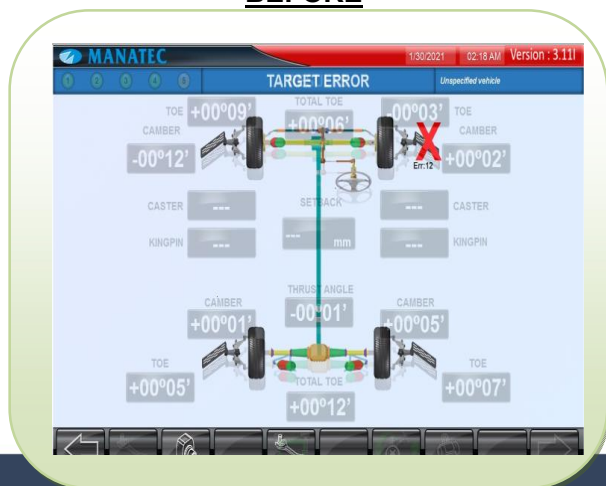
B) Press “Ctrl S” key to save the alignment job and quit from the wheel aligner software application. If there is a requirement to continue the job again, execute the wheel aligner software & resume back to the previous screen, by pressing “YES” in the dialogue box displayed. Or else, press “NO” to start new alignment.

C) In the “Target error” screen, click the home icon in the bottom menu & the software application will go back to initial screen (Home page) to start a new alignment. This is an additional option introduced recently in the software version 3.13C (Link given below)

<https://drive.google.com/file/d/1jySI4JQ8ZQIVJm2iy968xHrRaaUA2DS/view?usp=sharing>

But, please be informed that the above method of closing the aligner program, will never save the job in the alignment history & you may not be able view this particular alignment reports in future

BEFORE



AFTER

